



The Associated Architects

---

THE ASSOCIATED ARCHITECTS  
(TAA)

The Associated Architects, a professional corporation, has grown from forty five years practice in the United States and Japan. The firm has a broad background in architecture, city planning and urban design. The firm produced such award winning projects as The Place and Western Medical Institute of Research. Toru Ishida is the founder and president of The Associated Architects. Mr.Ishida has over forty years of architectural experience since he received his architectural degree from the University of California, Berkeley.

Mr.Ishida has won numerous design awards and his work has been published locally, nationally and internationally.

The firm's head quarter is located in Tokyo, and has special expertise in the area of project complexes, hotels, museums, commercial buildings, educational facilities, housing communities, health facilities and city planning. All the projects from housing to office buildings illustrate careful attention to siting, detail and finishes specially sustainability. Mr.Ishida also has built a reputation for designing responsible, safe buildings which emphasize anti-earthquake design. His works in San Francisco, Guam, and Kobe had no damage at all after the catastrophic earthquakes. Mr.Ishida is a member of the American Institute of Architects and Royal Institute of British Architects. Mr.Ishida is a Honorary Citizen of Dallas, Texas, U.S.A.

## 【SERVICES OFFERED】

For every project, The Associated Architects seeks an architecture that fits properly within the economic and physical fabric of its environment expresses its function and manifests the attitudes and direction of its clients.

This commitment requires that a broad range of services be offered, both technical and experimental .

### Architecture

Feasibility Analysis  
Programming  
Medical Planning  
Resort Planning  
Concept Design  
Schematic Design  
Design Development  
Construction Documents  
Construction Administration

### Planning

Master Planning and Urban Design

### Interior Design

Space Planning  
Interior Architecture and Design  
Graphic Design  
Facility Management

The managing principals activity participates in all phases of development, believing that their client desire and deserves a high degree of personal attention. One principal is assigned to manage each project through its duration, with a projects architect deployed to track all administrative and detail work. Associates are selected for their contributions based on their experience and the needs of the particular project. It is through the combined efforts of the project team that the client receives the best results and a consistent quality of work.

## 【REPRESENTATIVE PROJECTS】

### Architectural

•San Francisco Art Institute	San Francisco, U.S.A.
•French Hospital	San Francisco, U.S.A.
•Immaculate Heart College	Claremont, U.S.A.
- Student Union	
- Dormitories	
•The Western Medical Institute of Research	
	San Francisco, U.S.A.
•221Main High Rise Office Building	San Francisco, U.S.A.
•New Oriental Hotel	Kobe, Japan
•Oka Towers, Condominium Hotel	Guam, U.S.A.
•ALTS Ski and Golf Resort Hotel	Bandai, Japan
•Century Art Museum	Tokyo, Japan
•Kobe Museum Tower	Kobe, Japan

### Planning

•Immaculate Heart College Campus - Master Plan	Claremont, U.S.A.
•Port of San Francisco Water Front	San Francisco, U.S.A.
•Oakland City Center	Oakland, U.S.A.
•Embracadero High Rise Office Complex	
	San Francisco, U.S.A.
•Dededo New Town Project	Guam, U.S.A.
•Kaoshung Resort Town	Kaoshung, Taiwan
•Naoshima Artist Villages (495,000m <sup>2</sup> )	Kagawa, Japan
•Iwata City Redevelopment and New Town	Iwata, Japan
•Downtown Master Plan (29,700m <sup>2</sup> )	Yamaguchi, Japan

## 【ONGOING PROJECTS】

### Project

•Hotel and Condominium	63F
•Hotel 500 rooms	10F
•Condominium	24F

### Location

Yokohama, Japan
Kyoto, Japan
Tokyo, Japan

### Site (m<sup>2</sup>)

9,302m <sup>2</sup>
11,041m <sup>2</sup>
2,380m <sup>2</sup>

# ARCHITECTURE

---

TAA architectural staff is committed to the idea that sound architectural design results from a good relationship with our clients and a clear understanding of client's needs.

Architectural design is process involving constant dialogue between architect and client. We have the talent and ability to bring into focus the client's vision-infusing energy and style into a unique, living design tailored to project goals.

Our architectural services include:

- Commercial Design
- School Design
- Museum Design
- Health Facility Design
- Multifamily Planning Design
- Site Planning
- Energy-Efficient Design
- Feasibility Analysis
- Programming
- Medical Planning
- Resort Planning
- Concept Design
- Schematic Design
- Construction Document
- Construction Administration

TAA provides complete project management from establishing the necessary complementary professional services to monitoring the project scope, quality, schedule and budget.



Oka Towers, Guam



Century Art Museum

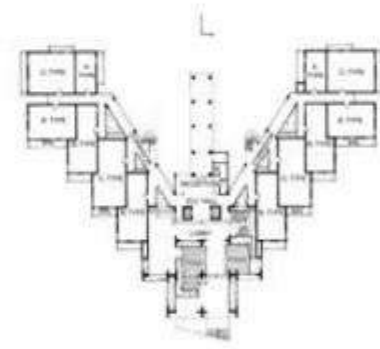
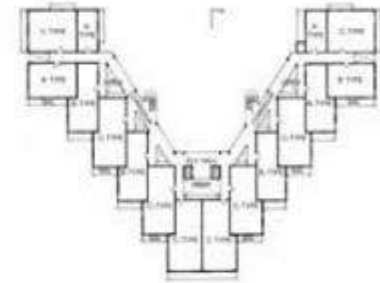
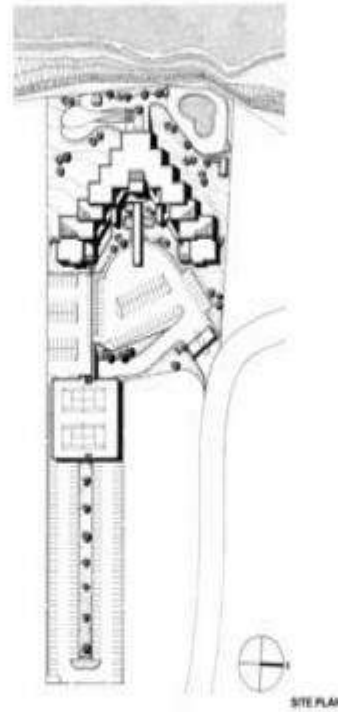
## OKA TOWERS, GUAM

The 176 units are located on a top of Oka cliff at Agana Jonestown in an area is a very exclusive residential area in Guam.

Housing is divided into two wings sited around central community facilities. High-rise buildings gradually step down to low scale family residences.



# OKA TOWERS, GUAM



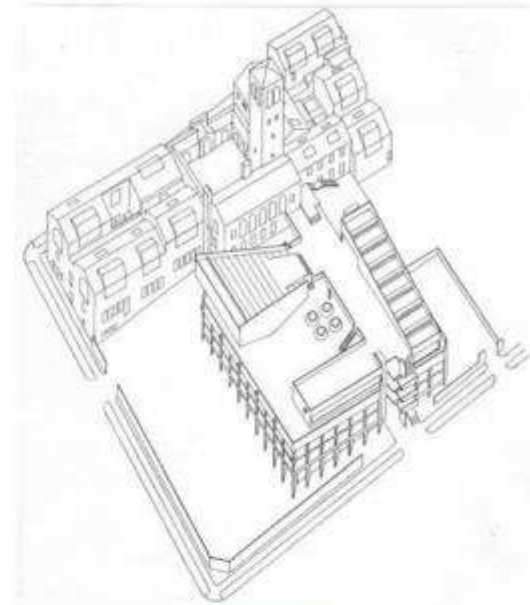
**OKA TOWERS, GUAM**



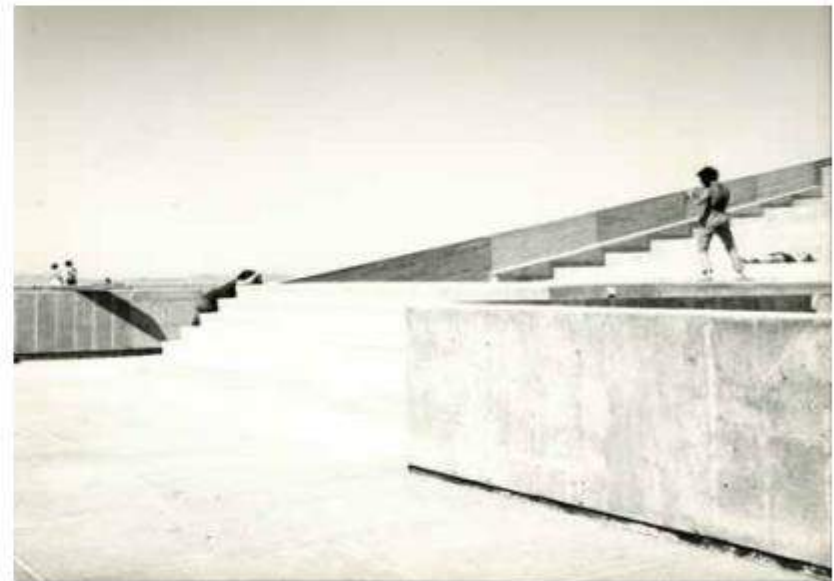
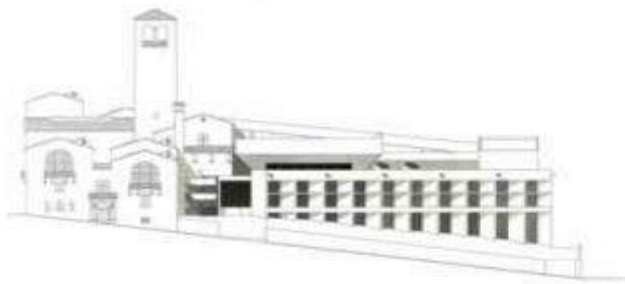
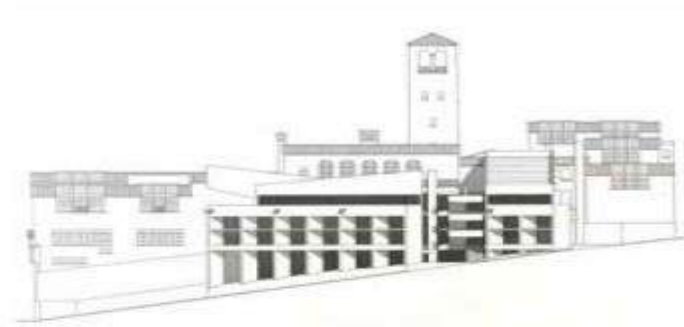


## SAN FRANCISCO ART INTSTITUTE

The program calls for additions and improvements to the San Francisco Art Institute. These include newly constructed auditorium, classrooms, offices, museum and studios, as well as renovation of existing buildings. The major goal was to create a consolidated urban campus with an environment appropriate to the educational experience and to the artistic profession.



## SAN FRANCISCO ART INSTITUTE , SAN FRANCISCO



## TAIPEI TWIN OFFICE BUILDINGS

The design for the Taipei Project creates major public forms in this region. Two reflective glass and granite towers rise from a continuous granite-sheathed base. The two buildings surround and define a public plaza. Between the buildings the atrium creates a great open hall enclosed in glass. 32-story twin tower consists of 147,000m<sup>2</sup> square meter of office, retail and department store space. The complex includes a 3 story parking structure, housing 434 automobiles.



# WESTERN MEDICAL INSTITUTE OF RESEARCH

Presidio of San Francisco, California, is a major medical research facility administered by the United States Army Medical Research and Development Command (USAMRDC). Its mission is derived from the consolidation of five research activities currently located throughout the country, with the additional requirement that it be immediately adjacent to a major general hospital located in a medial academic-oriented community.

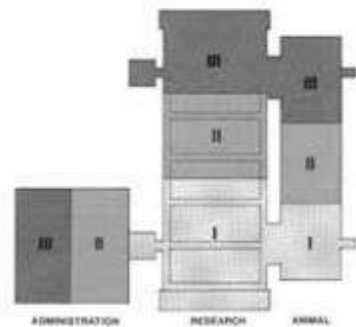


## WESTERN MEDICAL INSTITUTE OF RESEARCH

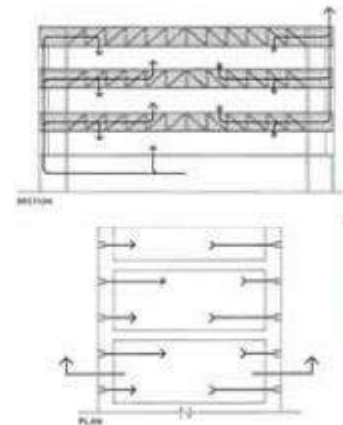
Although WMIR is a three-phase development, the facility can function as a complete unit at the completion of any phase. In addition to the phasing requirement, the program is divided into three major functions: basic research laboratories, administrative related support facilities, and animal support facilities, all of which expand in each phase.

The solution consists of parallel building modules connected by a major horizontal circulation grid intersected by vertical service/circulation towers. This not only permits a close relationship between building modules, but also permits virtually unlimited and independent expansion at any construction phase.

A different modular grid and internal system was developed within each of the three building modules, reflecting the specific functional and special requirements. The basic space requires maximum adaptability. Therefore an interstitial floor concept was developed with demountable wall system and module laboratory service system. The animal support unit, with special environmental requirements, utilizes concrete flat slab construction, solid plaster walls and plaster ceilings with epoxy coatings on the floors and walls. The administrative support facility, with its myriad of different functions, is best designed using long span concrete single tees, suspended acoustical tile ceiling grid, and standard office partitions on a 4-foot module.



INTERNAL FLOOR SYSTEM  
CONCEPT PLAN PHASE I - II - III



INTERNAL FLOOR SYSTEM



## ALTS RESORT HOTEL

Alts Ski and Golf Resort Hotel located at the foothill of Mt. Bandai, this hotel is geared to the skiers. Each room offers a panoramic view of the mountain and the lake. Featured amenities include shops, restaurants, conference facilities, a heated swimming pool.



## ALTS RESORT HOTEL



## SHIN KOBE ORIENTAL HOTEL

Kobe Oriental Hotel is a deluxe 600-room facility located just below Rokko Hill.

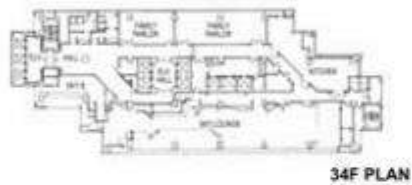
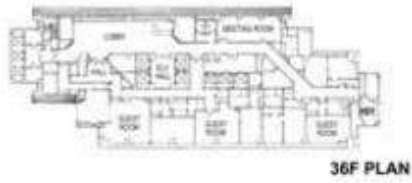
The 37-story complex consists of roughly 50,000m<sup>2</sup> hotel and 50,000m<sup>2</sup> parking facility.

The hotel is designed about a central atrium that features shopping center.





# SHIN KOBE ORIENTAL HOTEL



## SHERATON HOTEL, OKINAWA

Preserving the natural contour of its cliffside site, the Okinawa Sheraton Hotel designed on two terraced levels overlooking the Pacific on the Okinawa island. The 300 room hotel complex provides all the amenities of a world-class resort hotel, adjoining is 18 hole golf course.



## KOBE MUSEUM TOWER



## KOBE MUSEUM TOWER

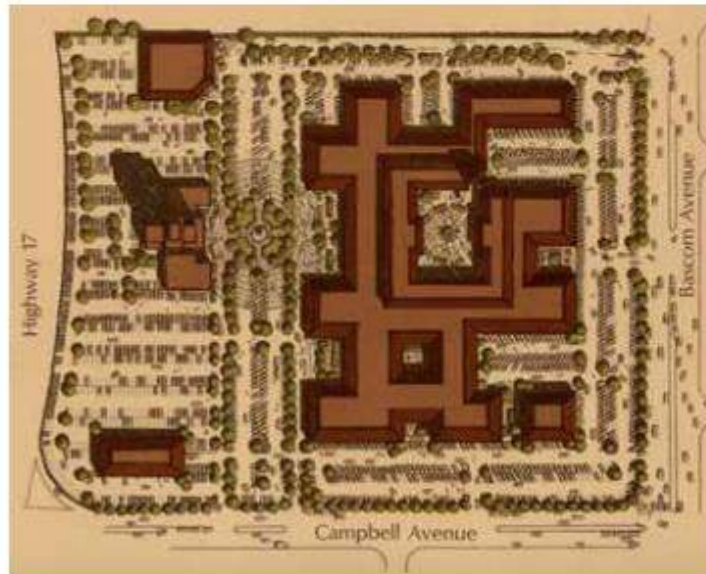


The Museum Tower is a forty-story, 125 unit development. The building is set on extensively landscaped grounds with large scale sculptures outside and small sculptures inside of the building. Every unit is located on the corner of the building overlooking the scenic Seto inland sea and Rokko mountains. The 125 unit complex includes landscaping with water falls and commissioned art work for both the exterior and interior. The City of Kobe has recognized the project for its open space design contributing neighboring communities.



## THE PRUNEYARD, CALIFOLNIA

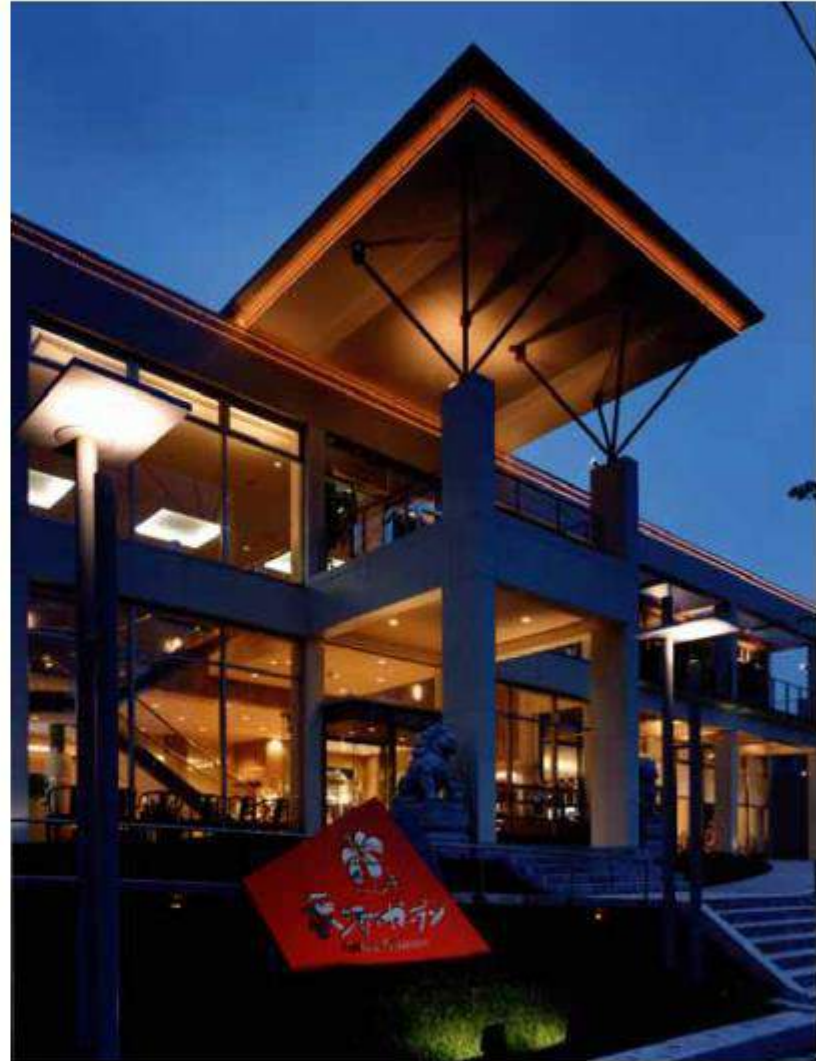
The heart of The Pruneyard is the Gran Plaza, an expanse of landscaped open space and fountains, reminiscent of the typical Spanish-Mexican Village of old. Each village was built around a large central plaza which was the center of social and commercial activity for that village of old. Each village was built around a large central plaza which was the center of social and commercial activity for that village. In olden times people would come from far and wide to barter, buy and sell goods and services of every nature and description. In addition, the central plaza was the location for all social activities, a place to exchange news, information and ideas on market days.



## THE PRUNEYARD, CALIFOLNIA



## HONG KONG GARDEN, TOKYO



## TAKASEGAWA



The design of the Takasegawa commercial building is located by the project's unique site in Kyoto. The site is bound on two sides by streets and on the third side by Takase river. These circumstances pose design problems of circulation, access and neighborhood integration. The solution is a two-story, mixed use building consisting of first floor and basement commercial level. This arrangement permits a maximum use of the site while addressing the building's urban context.





## TAKASEGAWA



# PLANNING

---

Planning begins with a vision. A vision shared by the client that will ultimately give direction to the project. Much more than a design, planning becomes a strategy for accomplishing an entire project.

At TAA we believe that effective planning is based upon a thorough knowledge of many disciplines. We blend various design criteria into a creative, flexible project blueprint, responsive to change.

Our planning services include:

- Urban Design
- Master Planning
- Site Planning
- Policy Development
- Comprehensive Plan Change
- Subdivision Planning and Design

In addition to a practical understanding of planning and design, many of our key staff have a through knowledge of municipal and public works planning requirements. This experience has been instrumental in bringing a client's vision into reality.



Oakland City Center

## CITY CENTER, OAKLAND

A redevelopment project of 15 city blocks. The Oakland Redevelopment Agency's program called for development of downtown office, convention center, commercial and residential facilities compatible with the urban environment.

The City Center project has transformed downtown Oakland into a premium modern urban business park.

Oakland Central District bounded by Broadway, Martin Luther King Jr. Way, and 11th and 14th Streets.



## CITY CENTER, OAKLAND



The city center project, a precisely crafted and planned redevelopment of Oakland's downtown core, has transformed this location into one of the Bay Area's premier urban centers. The twelve-block section of downtown bordered by Broadway, and Martin Luther King, Jr. Way, and 11<sup>th</sup> and 14<sup>th</sup> Street, is already demonstrating its tremendous potential. Seven buildings have been completed providing 1.7 million square feet of occupied office space.

City Center will eventually provide more than 5 million square feet of first class office space featuring a series of landscaped plazas and courtyards, with direct freeway and BART connections. The project's crowning jewel, City Square, is an architecturally inviting, low rise European style urban village of shops, offices, services and restaurants.

12sq. Blocks and 5 million sq. ft. of office space in multiple structures including the Clorox Building; the Federal Office Building; American President Company Building; the walls Fargo Building; City Square, and 4,000 parking spaces.

## THE PLACE, SAN BRUNO

Planning of this 20 acre site with historical significance and beauty capitalizes on the natural amenities and provides pleasant views and outdoor spaces. The 688 unit complex is designed around two acres of central recreation, connecting with secondary areas through a network of open spaces, all parking is covered. Buildings are scaled down in height and length, and articulated to provide variety and interest.



## THE PLACE, SAN BRUNO



The Associated Architects



# YAMAGUCHI NEW CENTRAL PARK

---

*The Associated Architects*

YAMAGUCHI - JAPAN

*Skidmore, Owings and Merrill LLP*

---

The Associated Architects

## YAMAGUCHI NEW CENTRAL PARK



Cross Canal Through the Great Canal



Promenade Along Gardens & Great Canal



Festive Retail Plaza



Library Entry Looking Toward the NHK Buildings



## IWATA REDEVELOPMENT PROJECT

The local government wanted to rebuild the old city and The Associated Architects produced a major master plan for redevelopment of the 300 acre area.

The design feature canals. Various circulation systems were utilized including a boat which linked between the existing river and the rest of the city.



# IWATA REDEVELOPMENT PROJECT



## KAOSHUNG RESORT PROJECT

TAA produced this master plan for phased development through the year 2005. Demand studies identified unique recreational use which could be planned on the hillside 3,300,000m<sup>2</sup> site.

This master plan consists of a major hotel with a 600 room hotel, two hotels with 300 room each, 36 hole golf course, a marina club, low, mid, high rise condominiums, an aquarium and a shopping center.



## BUKIT MUDAI NEW TOWN PROJECT

“TWIN PEAKS” are a 649 units projected on about 49,600 acres of fairly steep wooded terrain in Bukit Mudai Kuala Lumpur Malaysia.

“TWIN PEAKS” contains Bangalows, Semi-Detached Link House. Town House and three apartments sections.

“TWIN PEAKS” consists of three zones:East, West and North.

Grading has a strong influence on cost, utility and appearance of the project.

The earth - moving is minimized to keep natural contours trees on the site.



## YOKOHAMA HOTEL PROJECT

Yokohama Hotel is located by Tokyo Bay with sweeping views of MM21 and the bay.

TAA produced 63-story tower design consisting 500 luxury hotel room and high end condominium.

Featured amenities include open cafe, restaurants, convention facilities, a heated swimming pool in addition to convention and meeting rooms.

This tower is presently in the first design phase.

